



Screw compressors SCR-D

power range 22-55 kW

SCR - innovative and high-quality compressors



For more than 20 years, the SCR brand has been one of the world's leading screw compressor manufacturers, in particular thanks to its in-house development and design, the use of advanced technologies and, above all, unique design solutions that are appreciated by customers worldwide who are looking for machines with a modern concept and high energy efficiency.

Since 2018, SCR has been part of the Japanese concern ANEST IWATA, which brings to the SCR screw compressor portfolio the traditional Japanese emphasis on production organization, a strict management system and quality assurance. The result of the synthesis of the concepts of both companies is top-designed machines with unique benefits and uncompromising reliability.

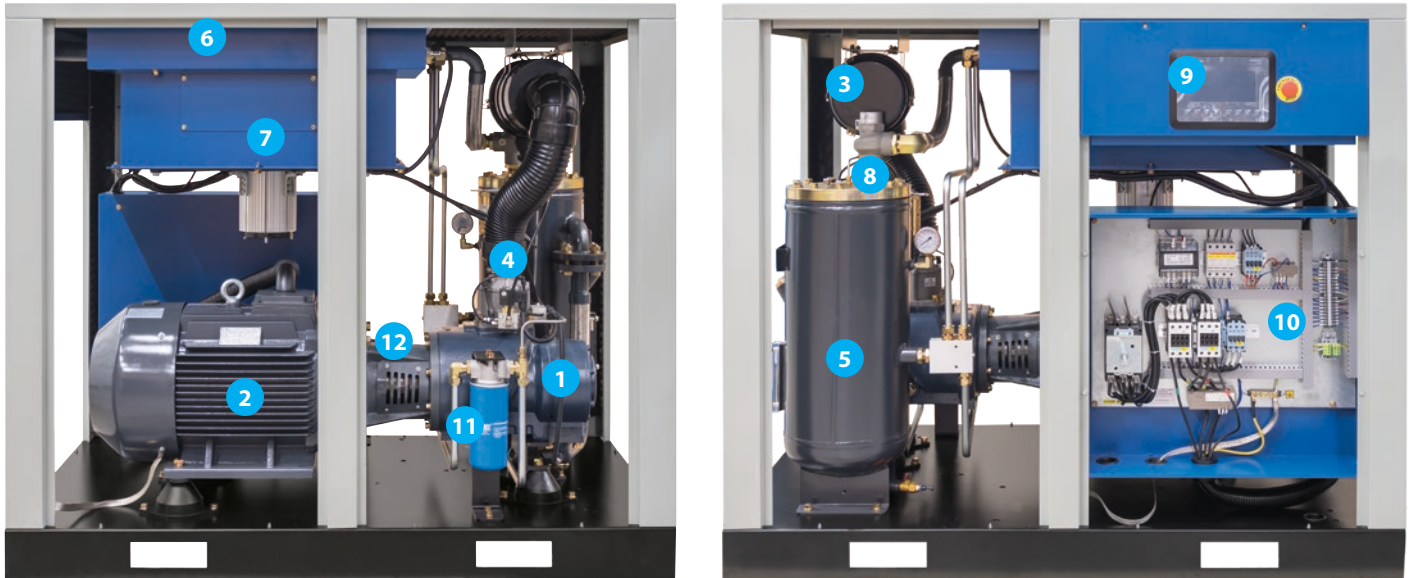
MAJOR BENEFITS

- ✓ high compression efficiency
- ✓ robust airend
- ✓ direct driven with elastic coupling
- ✓ touch screen controller
- ✓ effective oil separation < 3 ppm
- ✓ fan with speed control
- ✓ minimum maintenance
- ✓ 5-year extended warranty option



Design arrangement

All components used on the SCR-D series compressors are housed in a volumetrically sized cabinet providing sufficient comfort for maintenance and service works. The size of the internal volume of the casing used also assists to efficient cooling and heat dissipation so that the SCR-D compressors can be operated smoothly even in the summer months.



- | | | |
|-------------------------|---------------------------------|----------------------------------|
| 1 airend | 5 oil receiver | 9 controller |
| 2 electric motor | 6 air and oil cooler | 10 electrical switchboard |
| 3 air filter | 7 fan | 11 oil filter |
| 4 suction valve | 8 minimum pressure valve | 12 elastic coupling |

Top quality airends

SCR-D series screw compressors are equipped with modern airends with precision engineered rotors that provide high air compression efficiency. Thanks to the optimization of the airends to the size of the machine, the airends operate at very low speeds, which together with the premium brand bearings ensures extreme durability.

- ✓ ALLY WIN technology developed in Germany
- ✓ top quality branded bearings
- ✓ robust dimensions
- ✓ long service life
- ✓ high air compression efficiency



Modern electronic controller

The SCR-D series compressors are controlled by the modern SCR9000 electronic controller with simple operation via a 7" colour touch screen or by means of eight navigation buttons. The SCR9000 unit has many useful features for monitoring compressor status, operating and service settings and necessary alarms.



SCR9000 controller

- ✓ colour touch screen
- ✓ large 7" screen
- ✓ 6 languages
- ✓ network control of up to 16 compressors
- ✓ Modbus RS485 communication
- ✓ 4 pressure zones
- ✓ weekly scheduling
- ✓ automatic restart after voltage failure

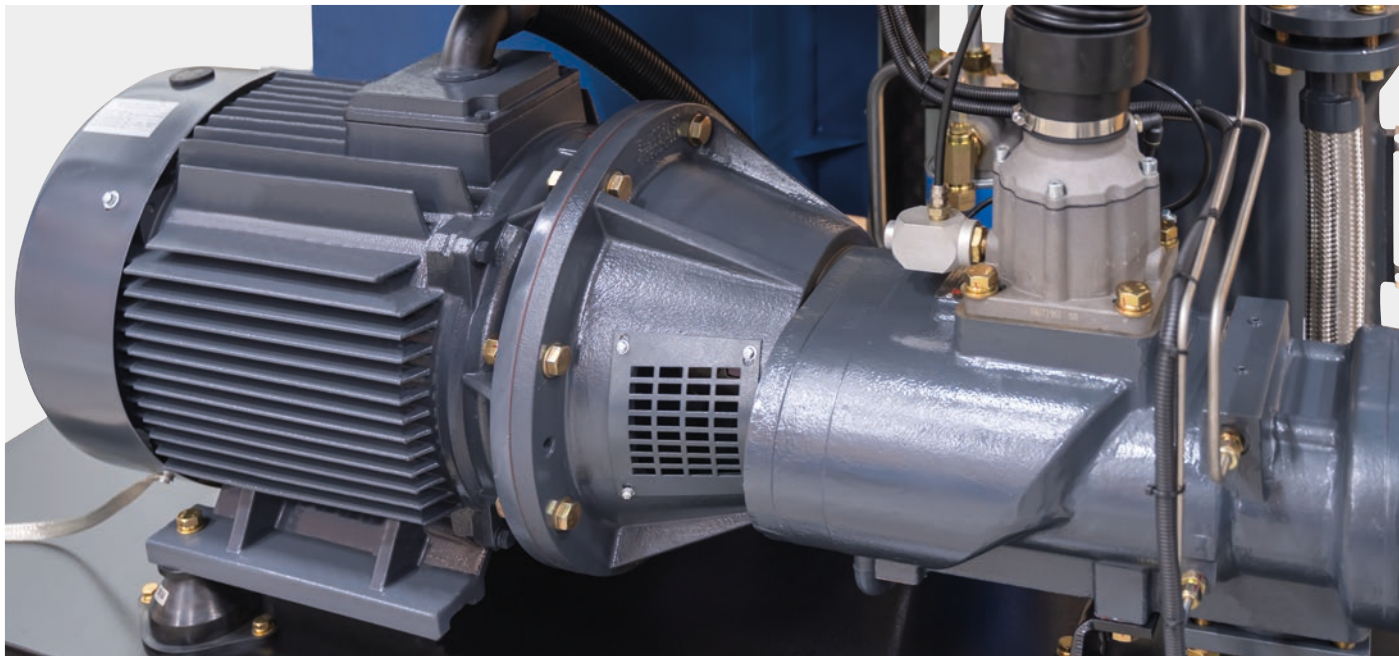
Compressor network control

If several SCR screw compressors are installed in a compressor room, their SCR9000 controllers can be easily connected via cables to provide comprehensive control of the entire network with minimum installation costs. The software in the SCR9000 unit allows for mutual network control with up to 16 machines based on a master-slave control system, regardless of how the individual machines are controlled.



Efficient coupling transmission

SCR-D series screw compressors feature an advanced airend connection to the main electric motor via a flexible coupling, ensuring high power transfer from the motor with minimum losses in the the transmission system.



Efficient technical solutions

Perfect oil separation

SCR-D series screw compressors are equipped with a highly efficient oil separation system that ensures perfect compressed air output quality with a peak oil content of < 3 ppm. Oil is separated by a three-stage separation system using centrifugal force, gravity effect in a vertically oriented oil receiver and a high-quality separation filter.

Pipes instead of hoses

All necessary fluid connections are made with metal tubing instead of traditional rubber hoses. Thanks to this design change, there is no need to worry about any oil leaks, no risk of downtime due to hose bursting and, in addition, the internal pressure drop is reduced due to the better flow of medium through the smoother surface.

Generous machine cooling

A generously sized combined cooler is used to cool oil and outlet air, perfectly cooled by an efficient fan. Thanks to the cooling system used, the compressor can be operated at very high temperatures of up to +45°C. This cooling solution also means very low outlet air temperature, which is only up to 10°C above the compressor inlet air temperature.



Quality original parts & available service

To ensure that the compressor achieves continuous peak performance and to minimise the risk of failure throughout the lifetime of the machine, the compressor must be maintained at prescribed intervals and only with genuine spare parts and lubricants.

All necessary spare parts are available for each SCR-D compressor and can be easily selected according to the documentation provided or according to their marking directly on the part inside the machine.

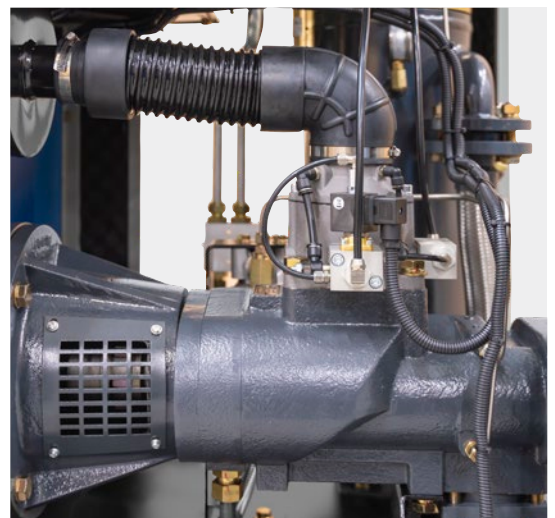
SCR-D compressors are maintained and serviced by an extensive network of service partners to ensure that all necessary services are readily and quickly available without unnecessary technician call-out costs.



Low maintenance costs

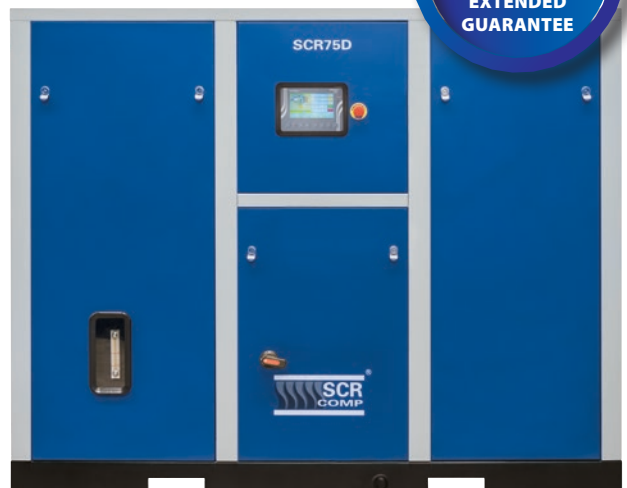
The concept of SCR-D compressors allows a significant reduction in the cost of regular maintenance. Compared to traditional compressors on the market, many service tasks such as replacing and tensioning V-belts, replacing rubber hoses, maintaining bearings on the main electric motor or the entire gear train are eliminated.

This eliminates the cost of unnecessary replacement parts, and when you add less technician work to the overall low cost of SCO parts and oils, you get really significant savings on SCR-D compressor maintenance.



Extended 5-year warranty

We are confident in the quality of the technical design of the SCR-D series compressors, the components used and our quality system of production. We therefore offer all customers the option of extending the standard warranty period to 5 years as a surcharge for the machine. Our extended warranty concept is not limited by the number of operating hours, does not require signing service contracts or shortening preventive maintenance intervals.



Technical data

Order No.	Power input	Max. pressure	FAD performance	Air output	Ventilation	Noise level
	(kW)	(bar)	(Nm ³ /h)		(m ³ /h)	dB(A)
SCR-22/7D	22	7	222	1"	5 400	72
SCR-22/8D		8	216			
SCR-22/10D		10	192			
SCR-30/7D	30	7	312	1 1/2"	7 200	72
SCR-30/8D		8	300			
SCR-37/7D	37	7	372	1 1/2"	9 000	75
SCR-37/8D		8	366			
SCR-37/10D		10	336			
SCR-45/7D	45	7	438	1 1/2"	9 000	75
SCR-45/8D		8	432			
SCR-45/10D		10	408			
SCR-55/7D	55	7	612	2"	15 600	78
SCR-55/8D		8	594			
SCR-55/10D		10	510			

FAD performance is measured according to ISO 1217.

The noise level is indicated for a distance of 1 m from the machine.



Dimensions and weights

Power input (kW)	Length (mm)	Depth (mm)	Height (mm)	Weight (kg)
22	1 380	850	1 160	580
30	1 600	1 000	1 360	800
37	1 600	1 000	1 360	860
45	1 850	1 000	1 360	950
55	2 150	1 350	1 500	1 720



Distributor of SCR compressors
for the Czech and Slovak Republics:



VSK Profi, s.r.o.
Hřbitovní 1324/27a
312 00 Plzeň - Doubravka

Phone +420 377 152 230
+420 377 152 211

E-mail info@scr-kompresory.cz

Website www.scr-kompresory.cz

Your expert dealer: